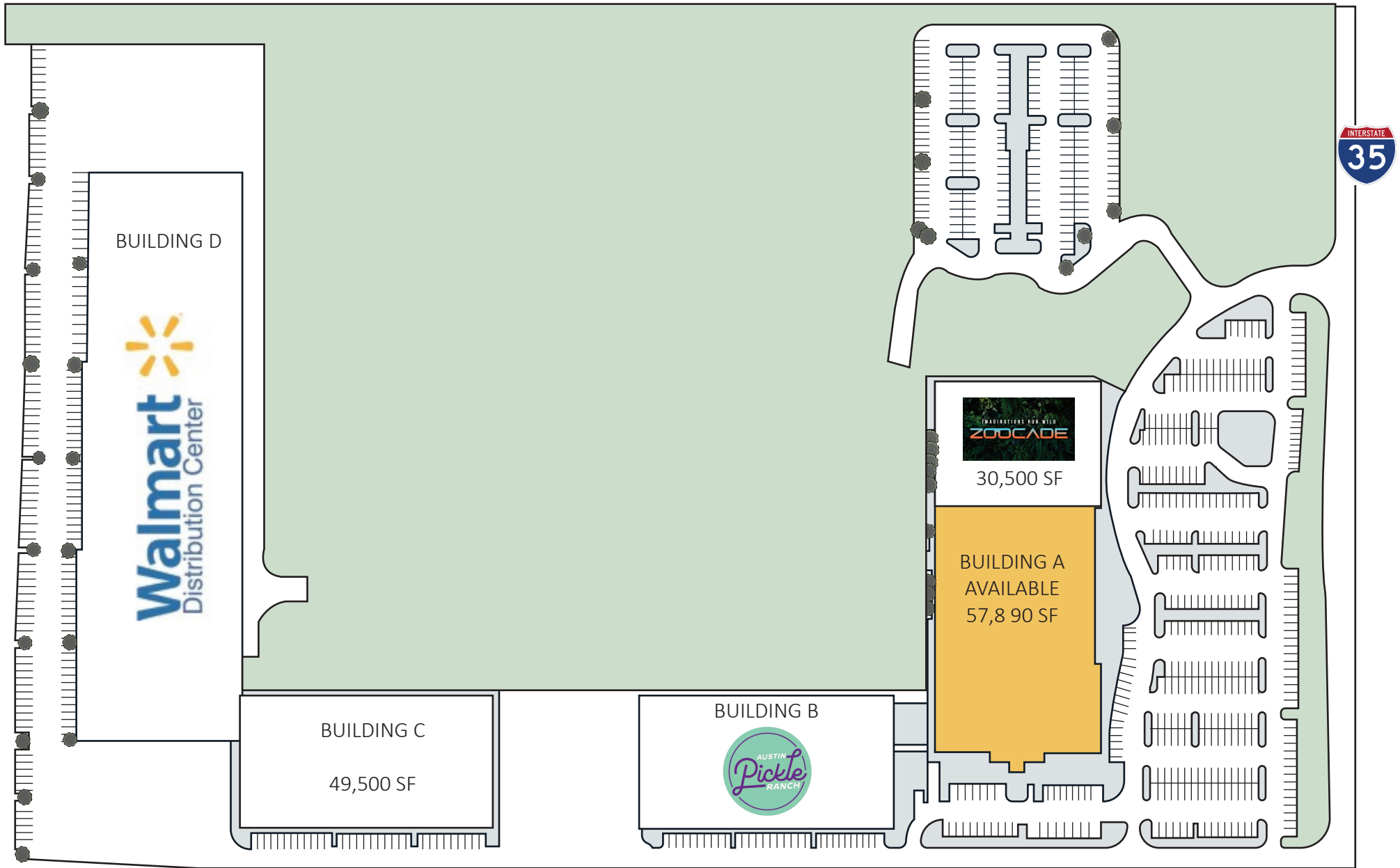


11000 MIDDLE FISKVILLE BUILDING A | 11000 MIDDLE FISKVILLE RD, AUSTIN , TX 78753

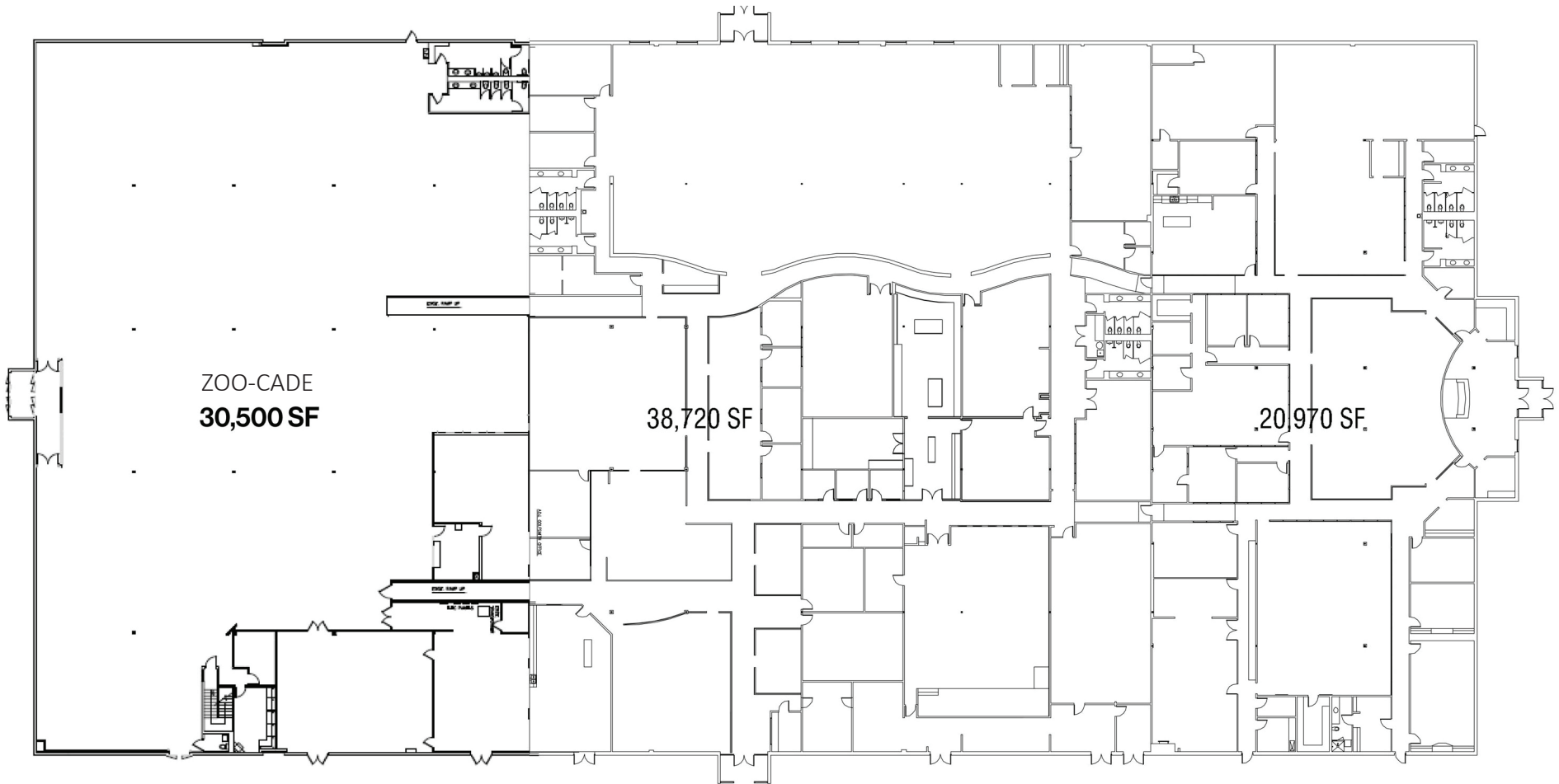


The information was obtained from sources deemed reliable; however, Weitzman has not verified it and makes no guarantees, warranties or representations as to the completeness or accuracy thereof. The presentation of this real estate information is subject to errors; omissions; change of price; prior sale or lease, or withdrawal without notice. You and your advisors should conduct a careful independent investigation of the property to determine if it is suitable for your intended purpose.

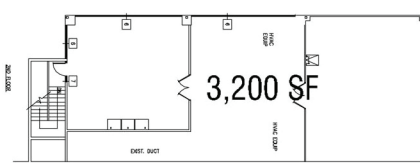
weitzman[®]

93,390 SF

DIVISIBLE TO 20,970 SF



GROUND FLOOR PLAN



MEZZANINE FLOOR
(Mechanical/Aircon Rooms)